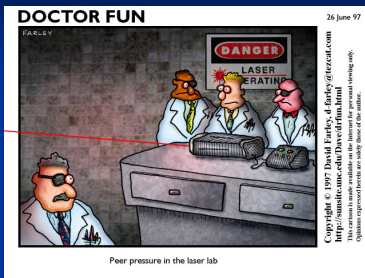


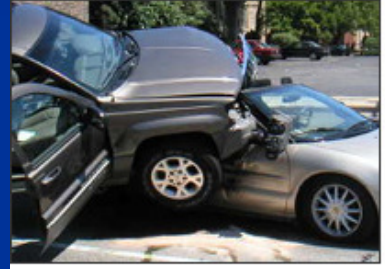
General Safety



Foundations of Engineering and Technology I

What is an Accident?

- An unplanned event that may or may not result in an injury



CAUSES OF ACCIDENTS

- 80% of accidents are caused by human error.
- 20% of accidents are caused by unsafe conditions in the surroundings.



Eye Protection

- Safety Glasses
- Eye Glass Side Shields
- Goggles
- Full Face Shields

ALWAYS WEAR EYE PROTECTION WHEN WORKING IN THE LABORATORY!



Tools

- Always inspect a tool before you use it.
- If there is a damaged switch or cord on a power tool report it to your teacher immediately so that the tool can be put up for repair.
- Never touch a power tool if it is moving, wait until it comes to a complete stop.
- Always use the tool for its proper function.

Using Power Tools in the Laboratory

- Always get permission from the teacher before you use the machinery.
- Never talk to another student or the instructor while he/she is operating the machinery.
- When using the machinery stand only in the "Operator Zone" or the area where only the machinery operator should stand.
- Always unplug a power tool by the plug not the cord.

Types of Machines

- Drill Press – When cutting holes make sure the material is secured in a Vise or Gripping Tool. Never hold the material.
- Band Saw – Use the guide to push material through the blade and keep your hands from the blade. Never force material, forcing means you are trying too hard and could bind.
- Scroll Saw – Move material slowly, keep your hand away from the blade.
- Sander – Hold material firmly, always move against the spin.



When in the Laboratory...

- The Laboratory is a dangerous place if you are not careful.
- Never Horse Play.
- Never Operate the machinery without checking with the teacher.
- Loose hair should be tied up, clothing tucked in, jewelry taken off, and long sleeves rolled up.
- If an accident should happen contact the teacher immediately.

Materials

- Paint, enamel, lacquer, or solvents must not be used near flames or sparks because they are flammable.
- Keep flammable materials in the metal cabinet.
- Never leave material lying around someone could get cut, slip, or fall.
- Hot metal placed in water can cause the water to be hot enough to burn someone.

Clean Up

**ALWAYS CLEAN
UP THE
LABORATORY
BEFORE YOU
LEAVE!!!!**